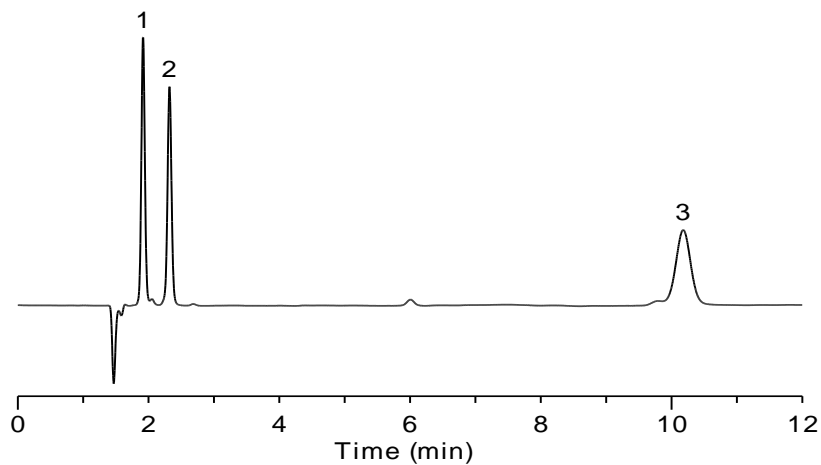


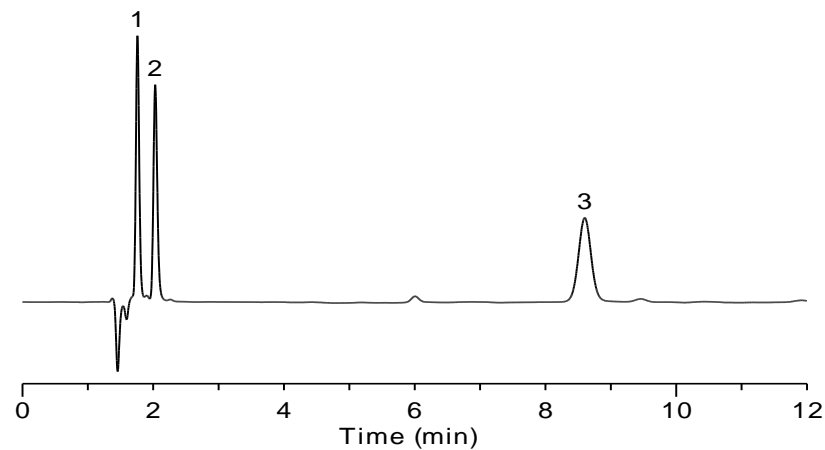
Sweeteners

Columns:	Listed on chromatograms
Dimensions:	150×4.6mm ID, 5 μm(all columns)
Mobile Phase:	MeOH: 20mM NH₄OAc(pH=5.0)=30:70
Flow Rate:	1.0ml/min
Temperature:	Ambient
Detection:	UV 210nm
Sample:	1. Acesulfame K 2. Saccharin, Sodium 3. Aspartame

Inspire



Spursil C18



Spursil C18-EP

